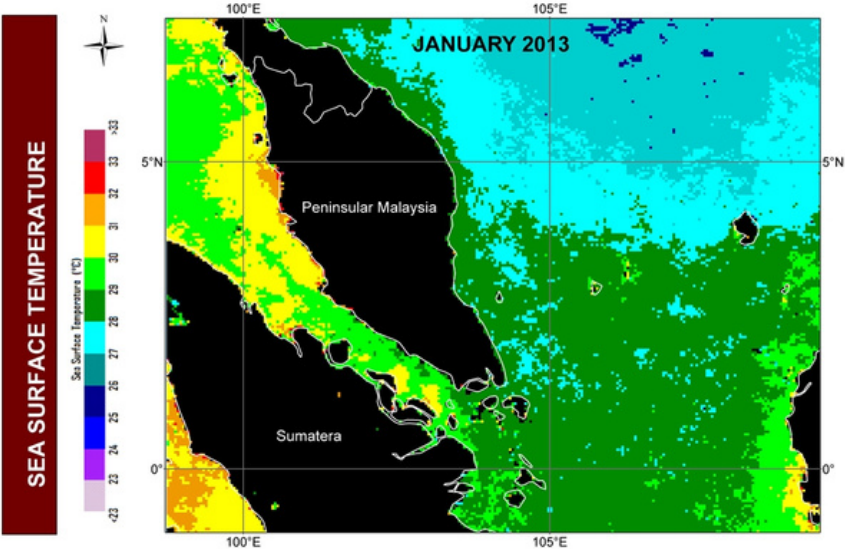


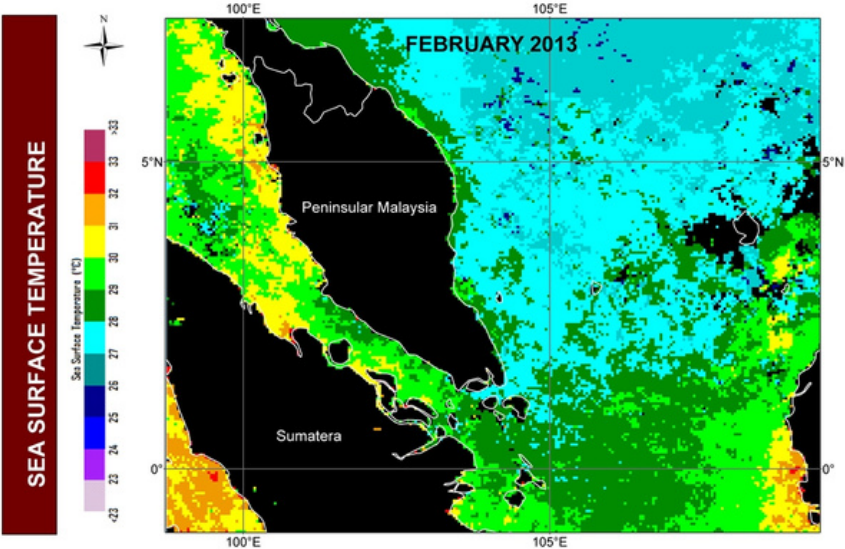
TREND OF SEA SURFACE TEMPERATURE IN PENINSULAR MALAYSIA

MONTH: JANUARY 2013



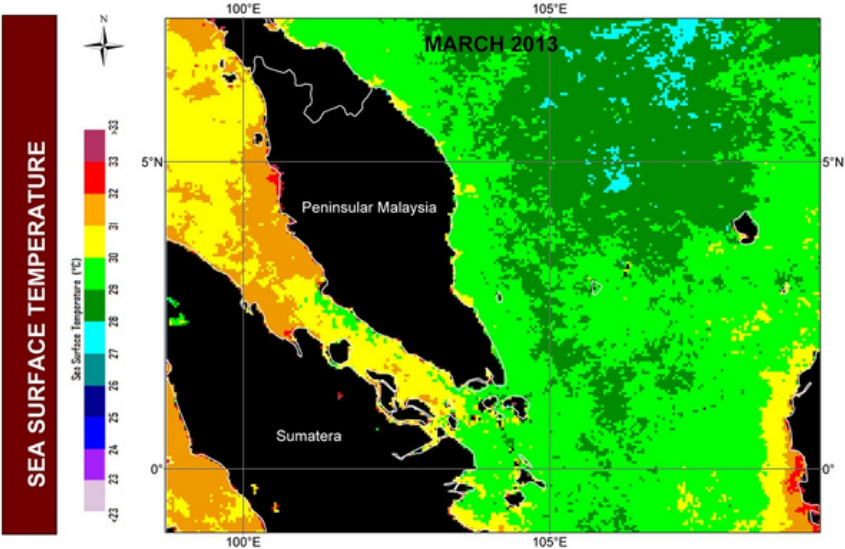
TREND OF SEA SURFACE TEMPERATURE IN PENINSULAR MALAYSIA

MONTH: FEBRUARY 2013



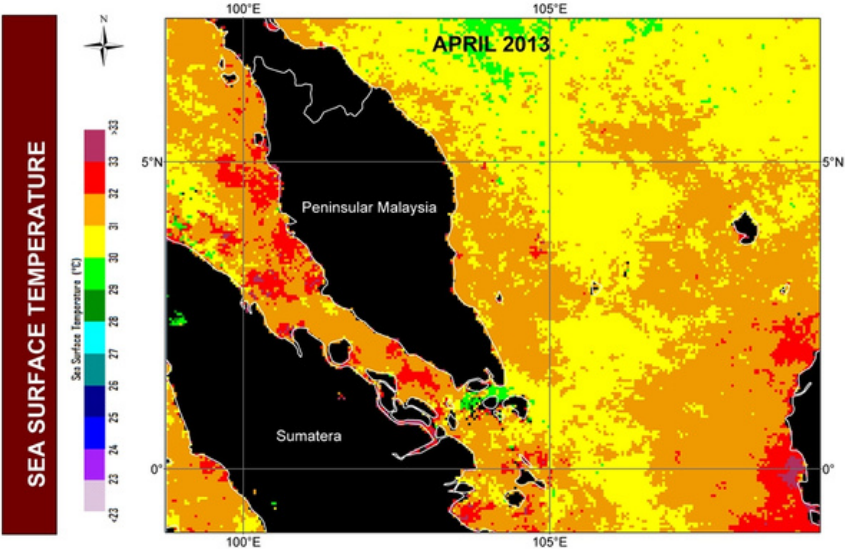
TREND OF SEA SURFACE TEMPERATURE IN PENINSULAR MALAYSIA

MONTH: MARCH 2013



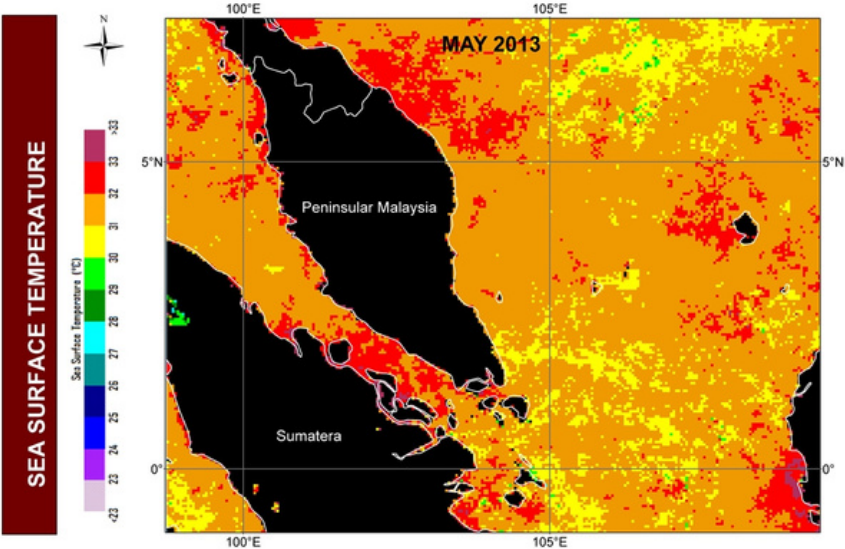
TREND OF SEA SURFACE TEMPERATURE IN PENINSULAR MALAYSIA

MONTH: APRIL 2013



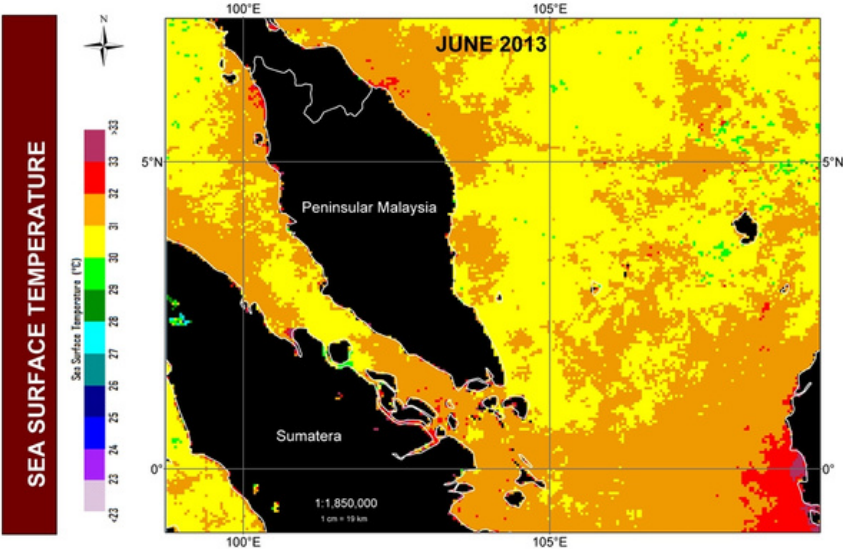
TREND OF SEA SURFACE TEMPERATURE IN PENINSULAR MALAYSIA

MONTH: MAY 2013



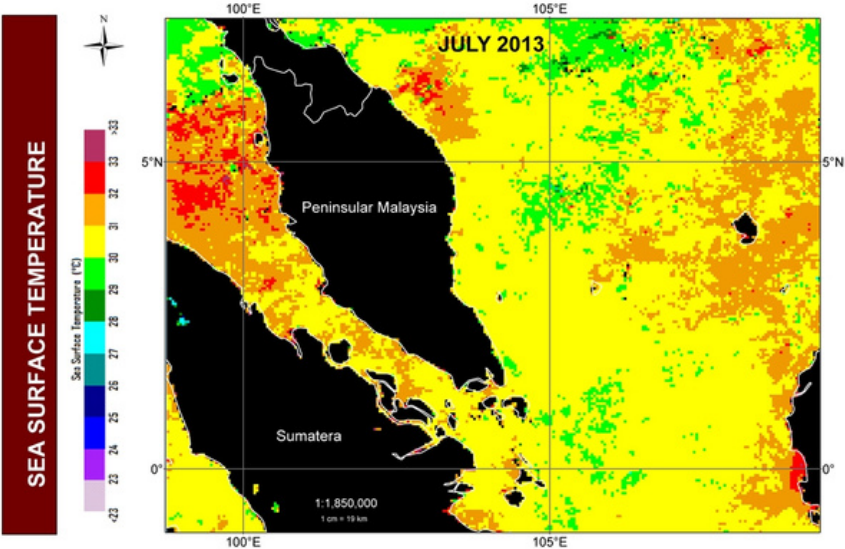
TREND OF SEA SURFACE TEMPERATURE IN PENINSULAR MALAYSIA

MONTH: JUNE 2013



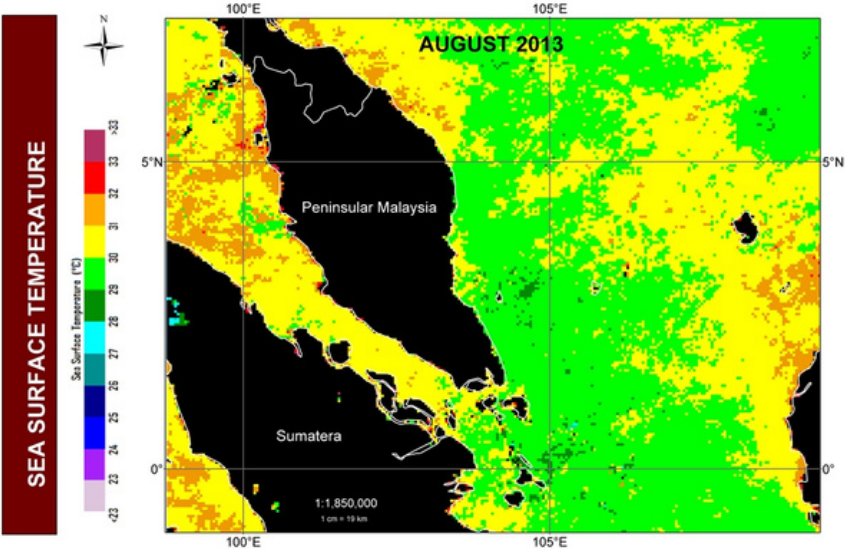
TREND OF SEA SURFACE TEMPERATURE IN PENINSULAR MALAYSIA

MONTH: JULY 2013



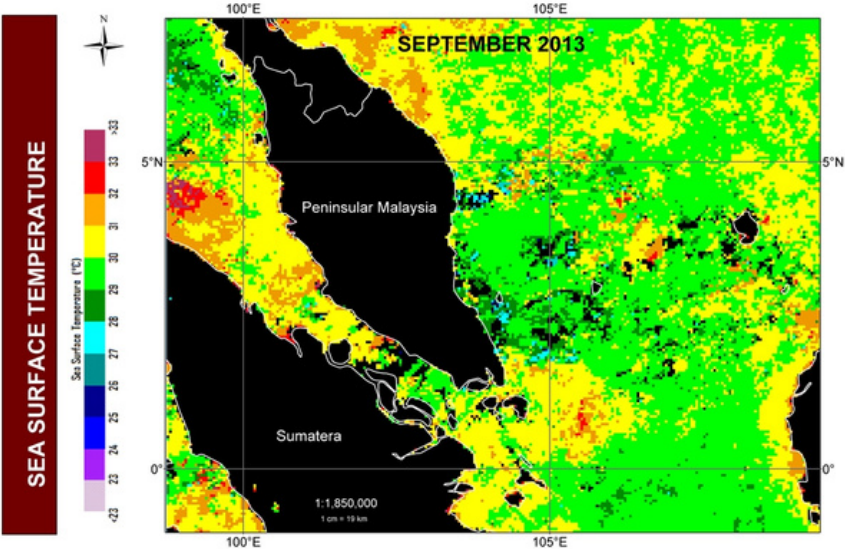
TREND OF SEA SURFACE TEMPERATURE IN PENINSULAR MALAYSIA

MONTH: AUGUST 2013



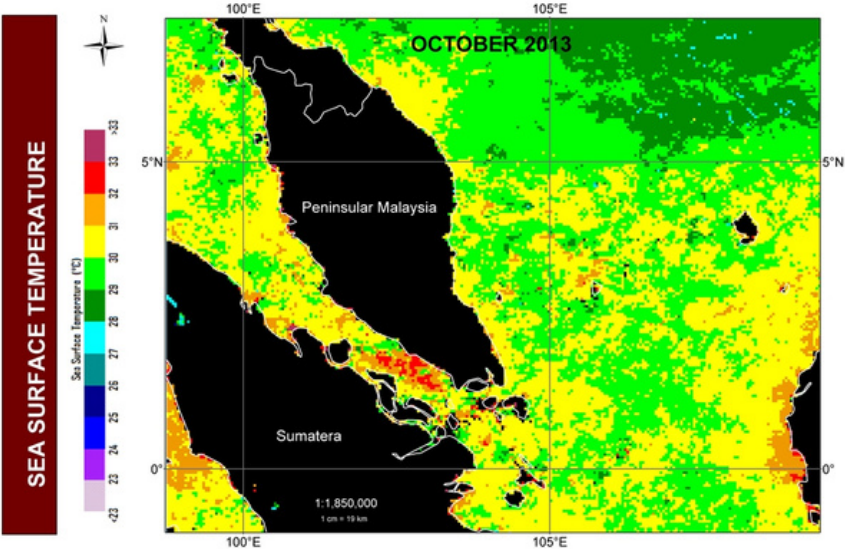
TREND OF SEA SURFACE TEMPERATURE IN PENINSULAR MALAYSIA

MONTH: SEPTEMBER 2013



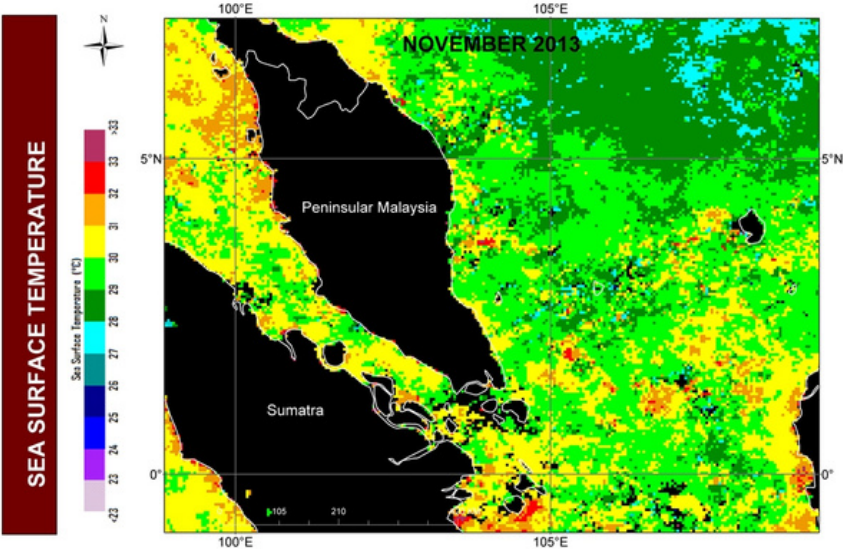
TREND OF SEA SURFACE TEMPERATURE IN PENINSULAR MALAYSIA

MONTH: OCTOBER 2013



TREND OF SEA SURFACE TEMPERATURE IN PENINSULAR MALAYSIA

MONTH: NOVEMBER 2013



TREND OF SEA SURFACE TEMPERATURE IN PENINSULAR MALAYSIA

MONTH: DECEMBER 2013

