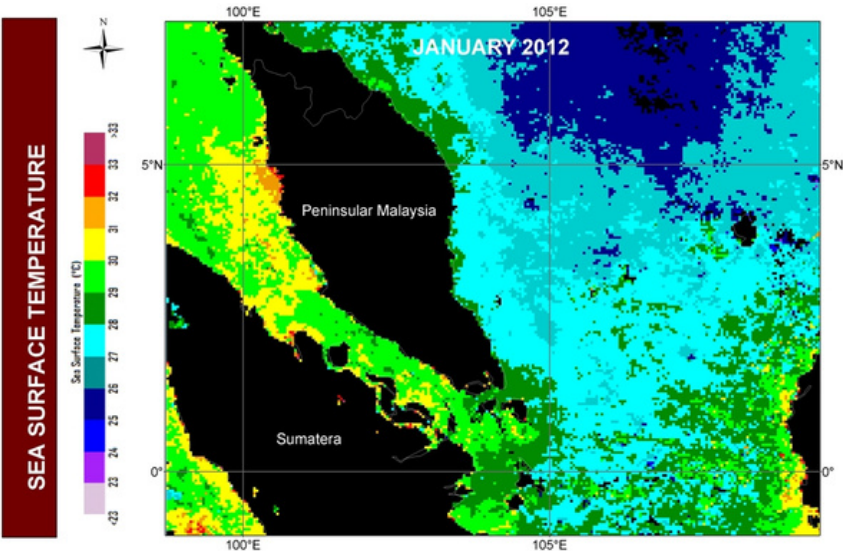


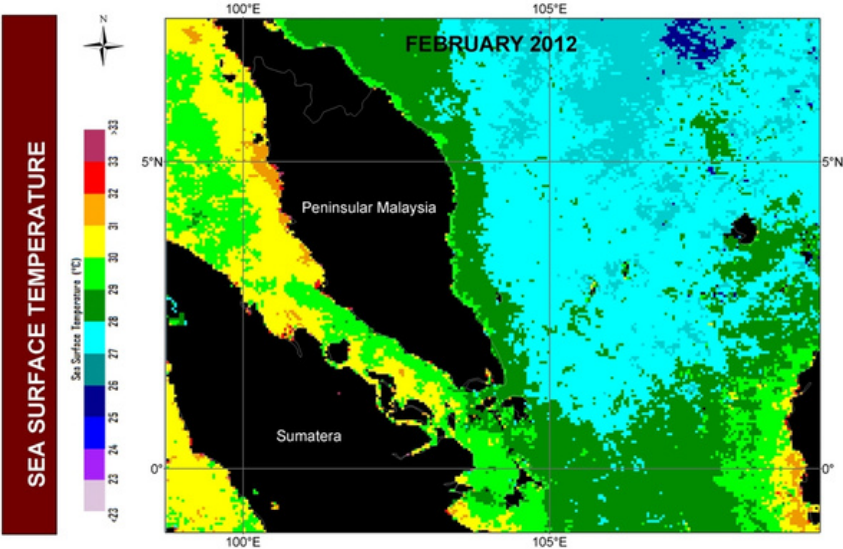
TREND OF SEA SURFACE TEMPERATURE IN PENINSULAR MALAYSIA

MONTH: JANUARY 2012



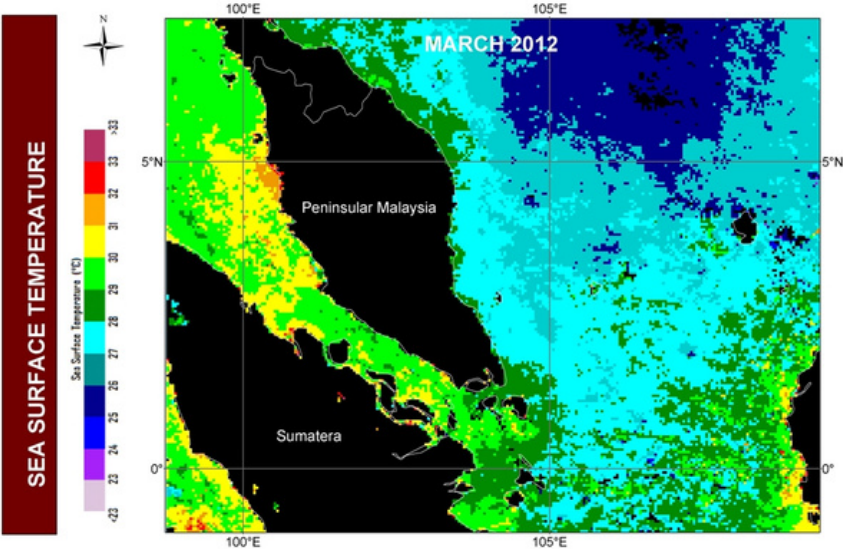
TREND OF SEA SURFACE TEMPERATURE IN PENINSULAR MALAYSIA

MONTH: FEBRUARY 2012



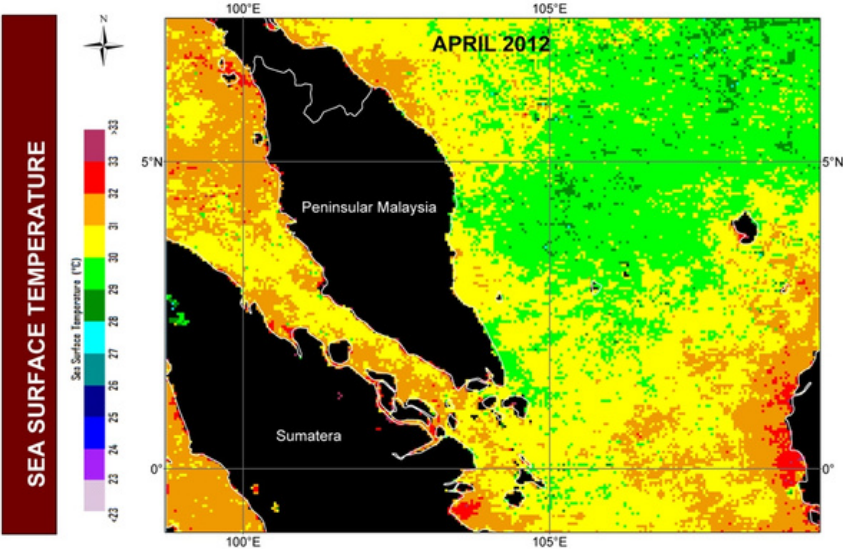
TREND OF SEA SURFACE TEMPERATURE IN PENINSULAR MALAYSIA

MONTH: MARCH 2012



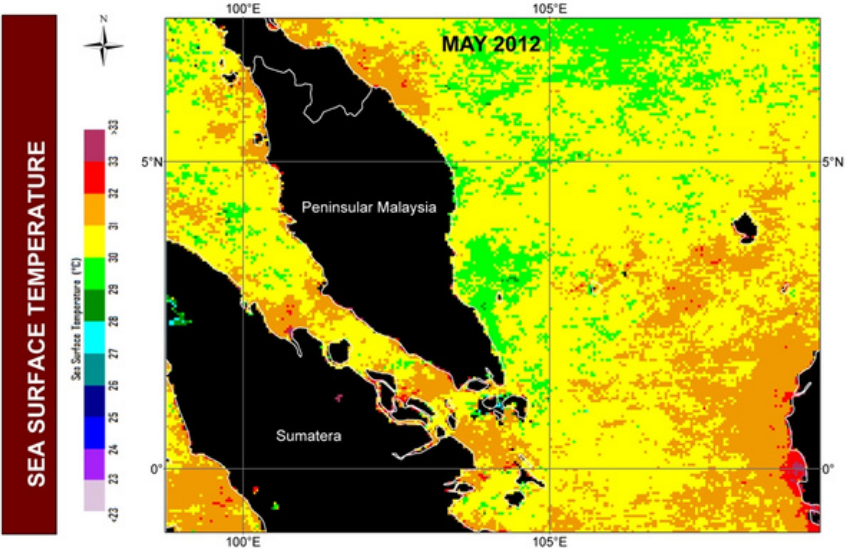
TREND OF SEA SURFACE TEMPERATURE IN PENINSULAR MALAYSIA

MONTH: APRIL 2012



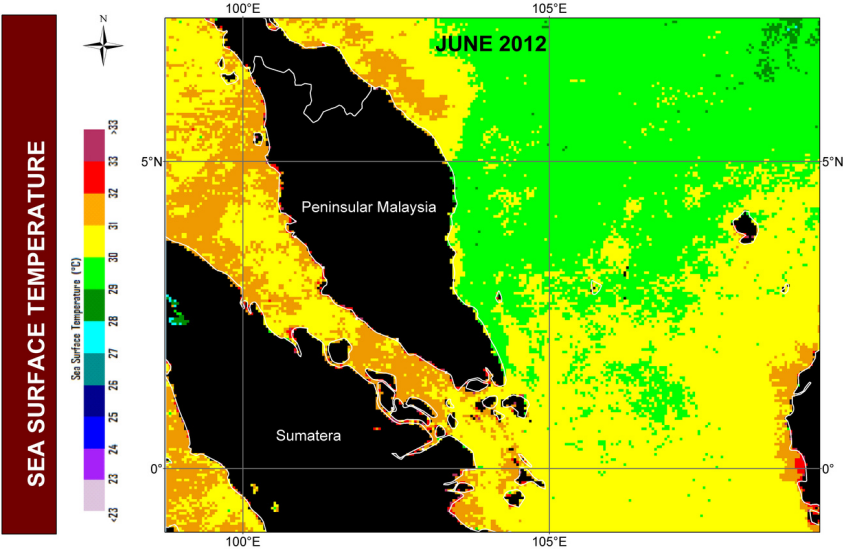
TREND OF SEA SURFACE TEMPERATURE IN PENINSULAR MALAYSIA

MONTH: MAY 2012



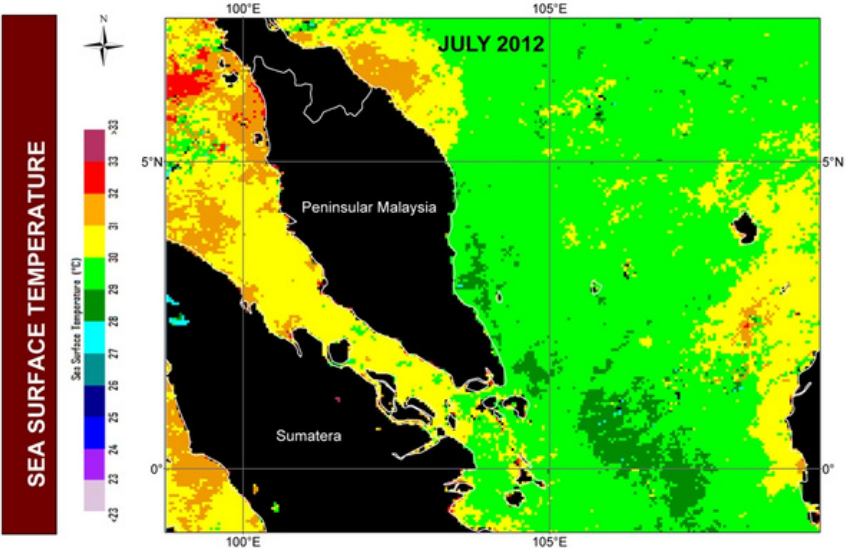
TREND OF SEA SURFACE TEMPERATURE IN PENINSULAR MALAYSIA

MONTH: JUNE 2012



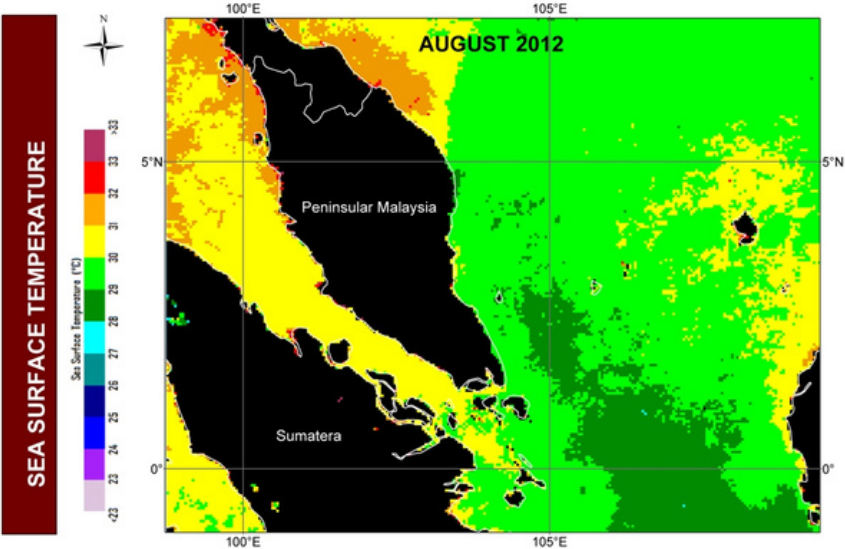
TREND OF SEA SURFACE TEMPERATURE IN PENINSULAR MALAYSIA

MONTH: JULY 2012



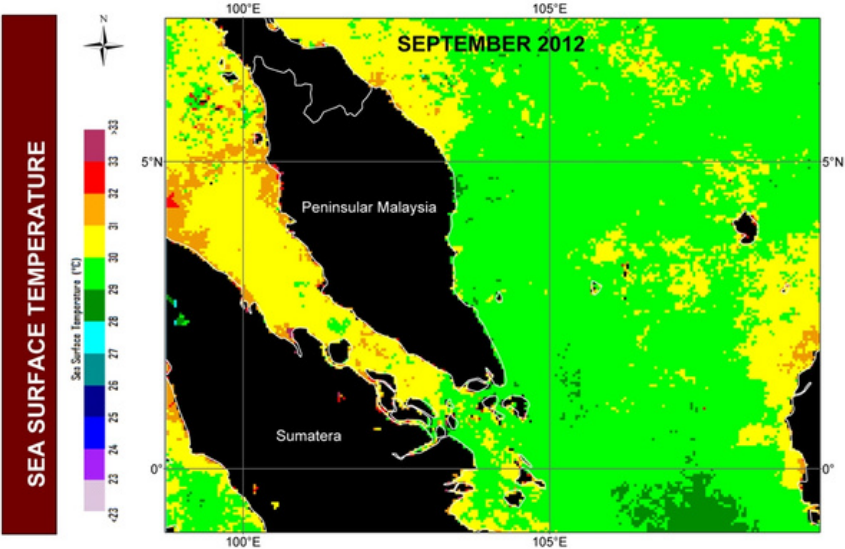
TREND OF SEA SURFACE TEMPERATURE IN PENINSULAR MALAYSIA

MONTH: AUGUST 2012



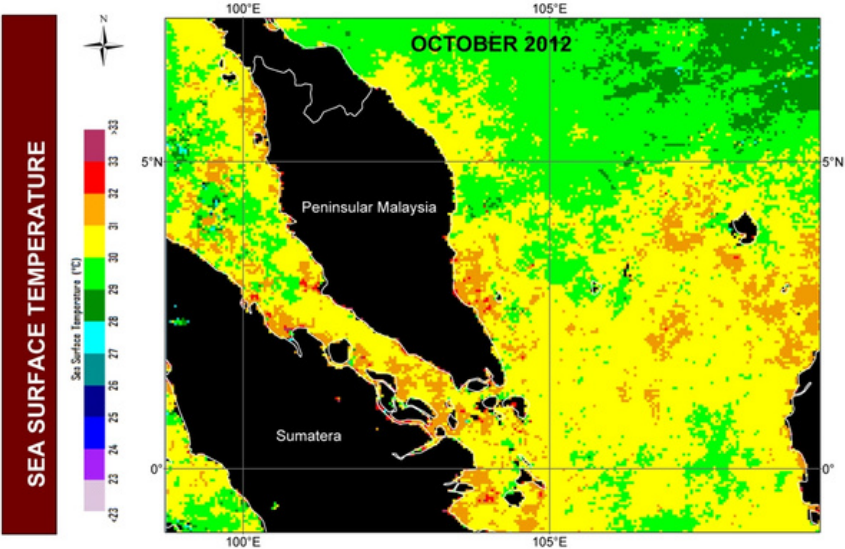
TREND OF SEA SURFACE TEMPERATURE IN PENINSULAR MALAYSIA

MONTH: SEPTEMBER 2012



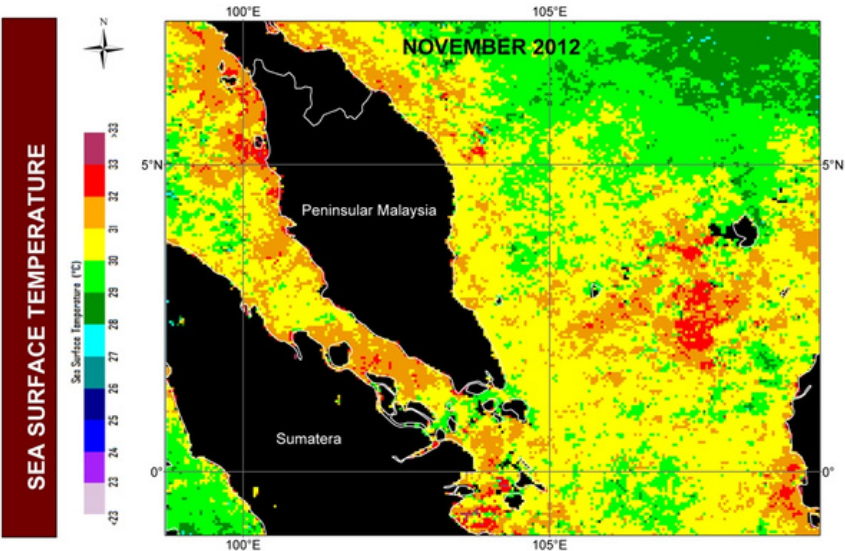
TREND OF SEA SURFACE TEMPERATURE IN PENINSULAR MALAYSIA

MONTH: OCTOBER 2012



TREND OF SEA SURFACE TEMPERATURE IN PENINSULAR MALAYSIA

MONTH: NOVEMBER 2012



TREND OF SEA SURFACE TEMPERATURE IN PENINSULAR MALAYSIA

MONTH: DECEMBER 2012

