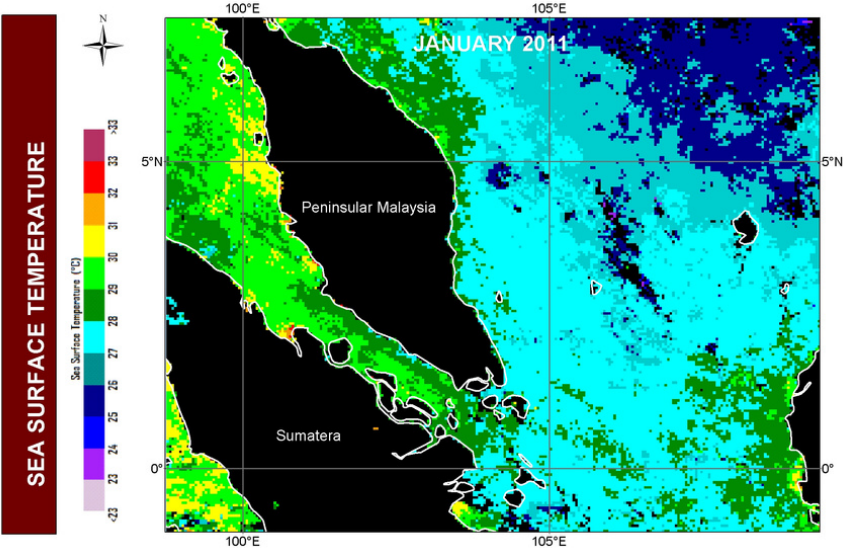


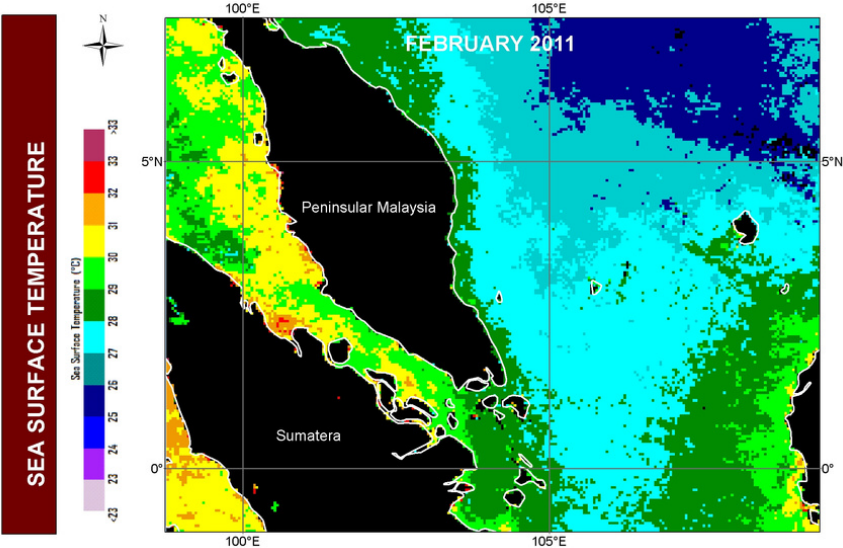
TREND OF SEA SURFACE TEMPERATURE IN PENINSULAR MALAYSIA

MONTH: JANUARY 2011



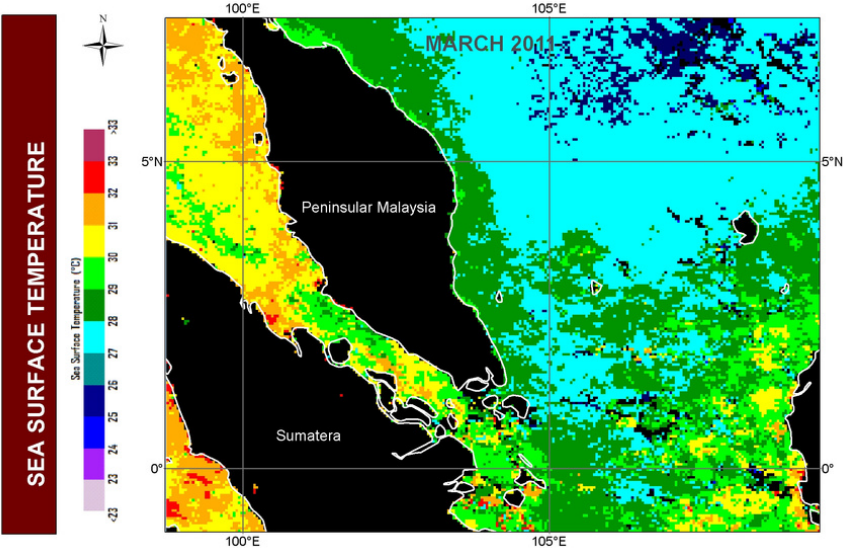
TREND OF SEA SURFACE TEMPERATURE IN PENINSULAR MALAYSIA

MONTH: FEBRUARY 2011



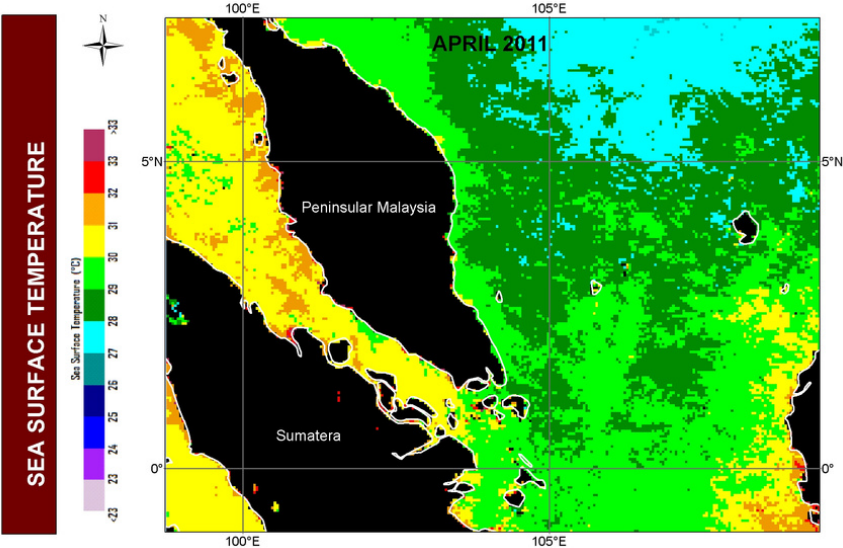
TREND OF SEA SURFACE TEMPERATURE IN PENINSULAR MALAYSIA

MONTH: MARCH 2011



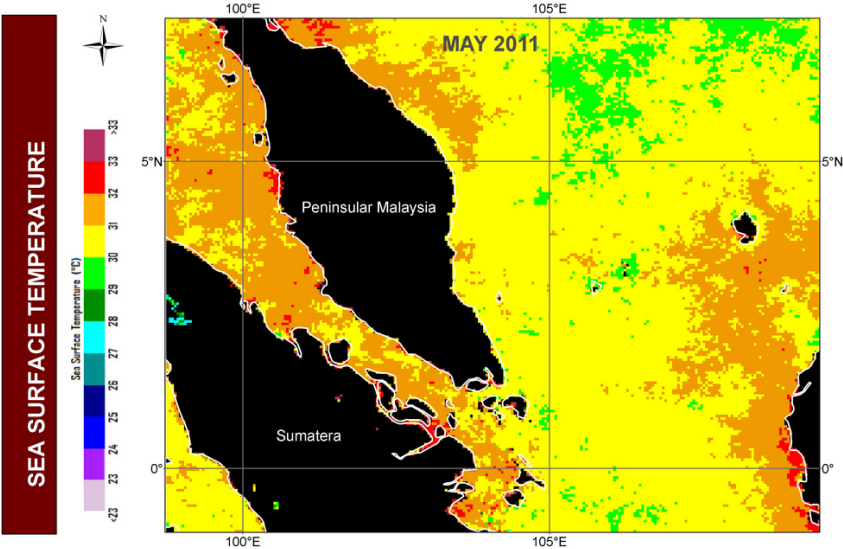
TREND OF SEA SURFACE TEMPERATURE IN PENINSULAR MALAYSIA

MONTH: APRIL 2011



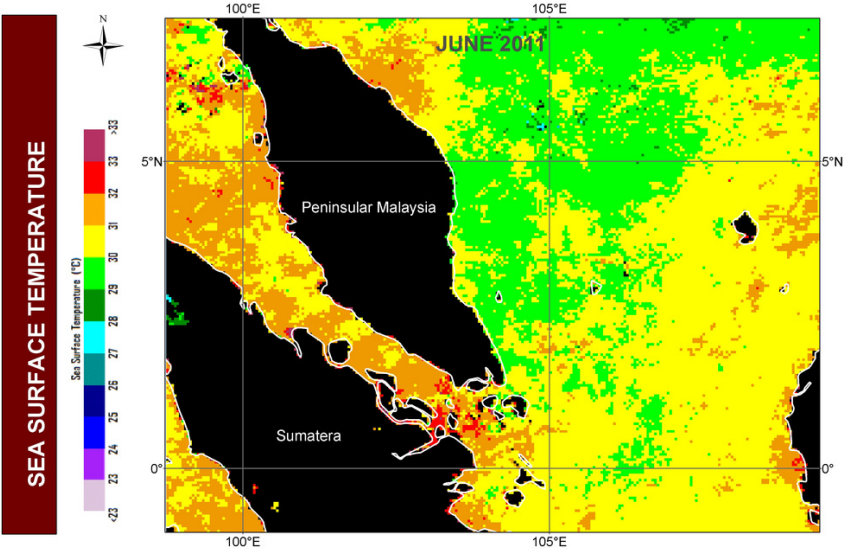
TREND OF SEA SURFACE TEMPERATURE IN PENINSULAR MALAYSIA

MONTH: MAY 2011



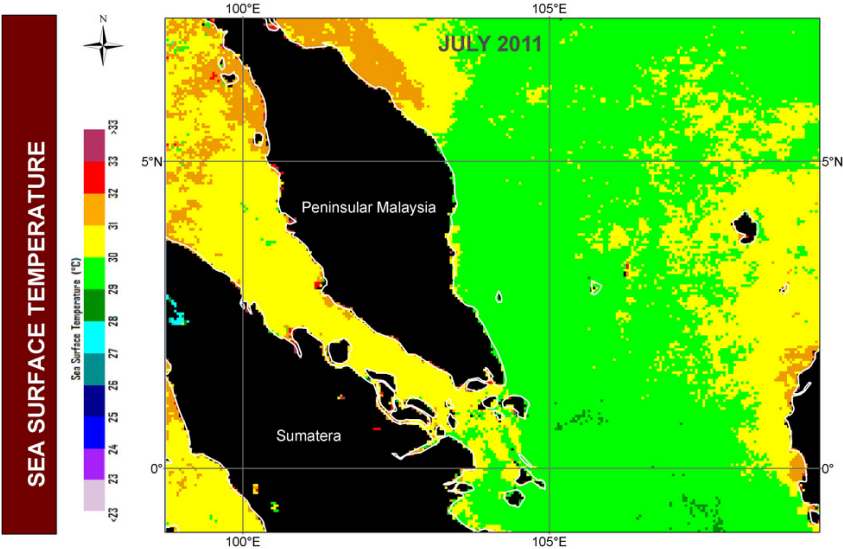
TREND OF SEA SURFACE TEMPERATURE IN PENINSULAR MALAYSIA

MONTH: JUNE 2011



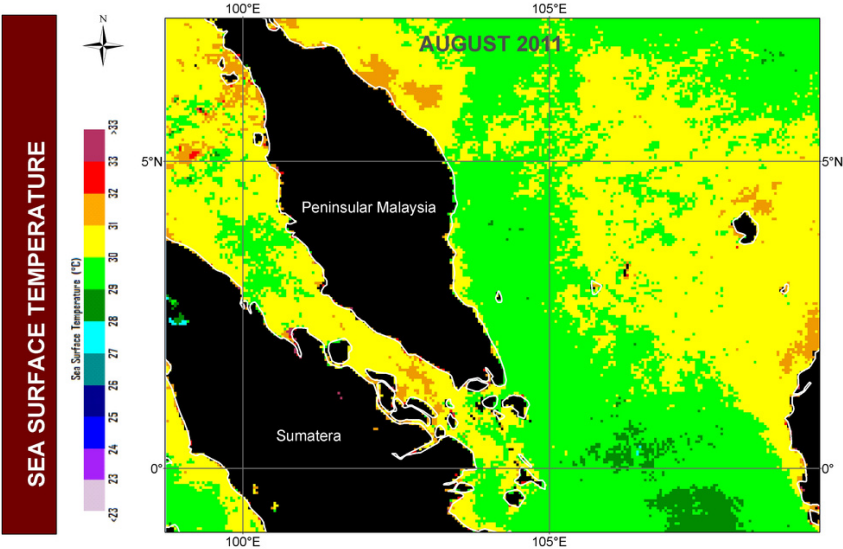
TREND OF SEA SURFACE TEMPERATURE IN PENINSULAR MALAYSIA

MONTH: JULY 2011



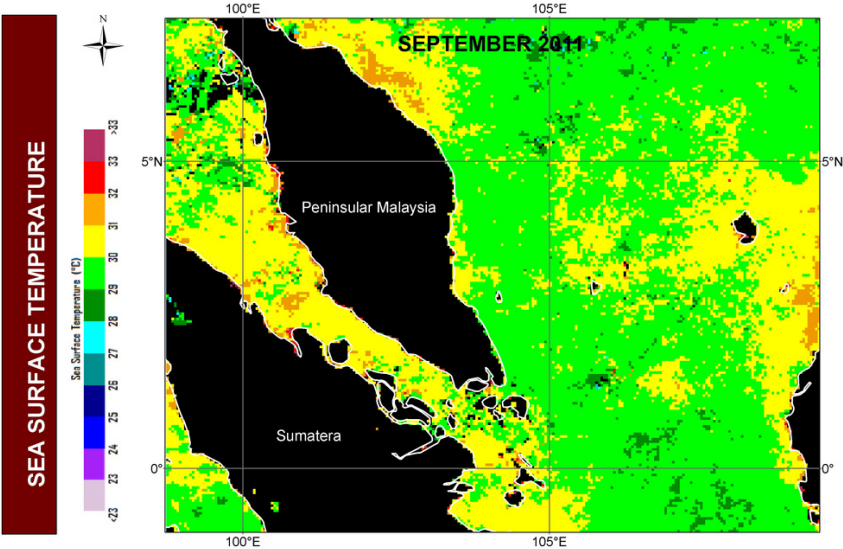
TREND OF SEA SURFACE TEMPERATURE IN PENINSULAR MALAYSIA

MONTH: AUGUST 2011



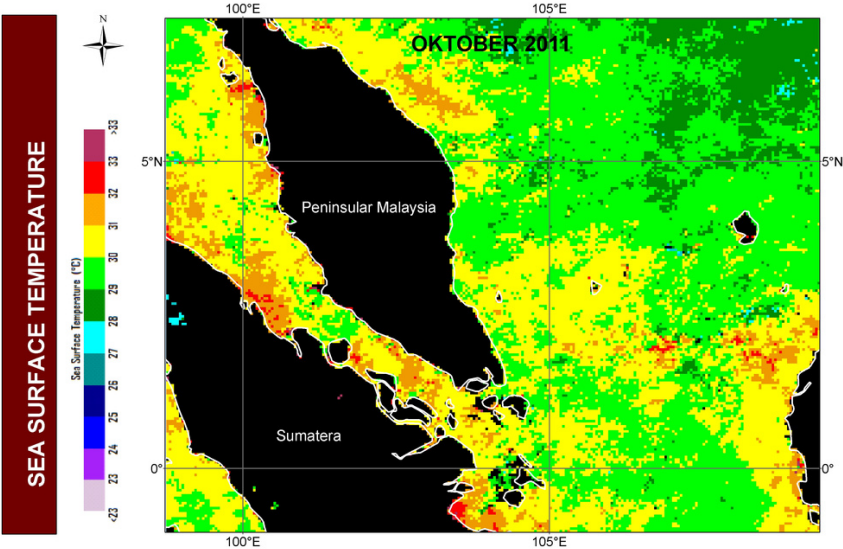
TREND OF SEA SURFACE TEMPERATURE IN PENINSULAR MALAYSIA

MONTH: SEPTEMBER 2011



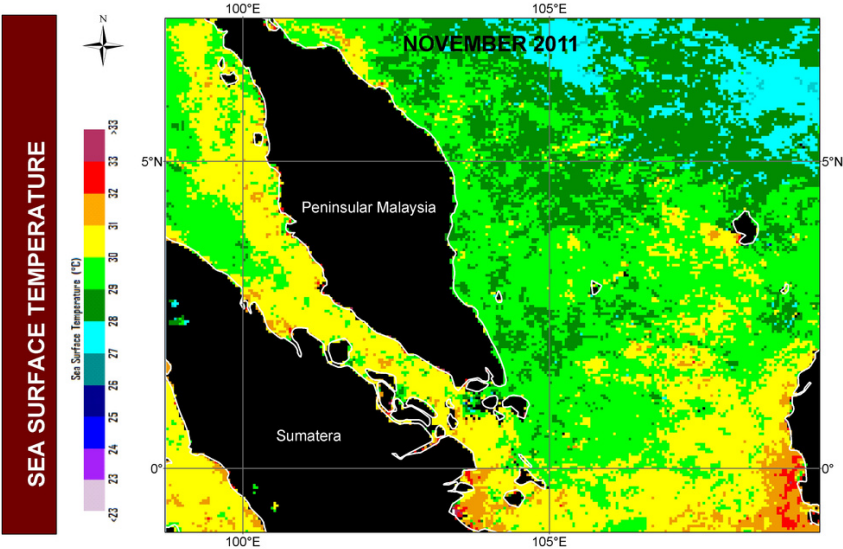
TREND OF SEA SURFACE TEMPERATURE IN PENINSULAR MALAYSIA

MONTH: OCTOBER 2011



TREND OF SEA SURFACE TEMPERATURE IN PENINSULAR MALAYSIA

MONTH: NOVEMBER 2011



TREND OF SEA SURFACE TEMPERATURE IN PENINSULAR MALAYSIA

MONTH: DECEMBER 2011

