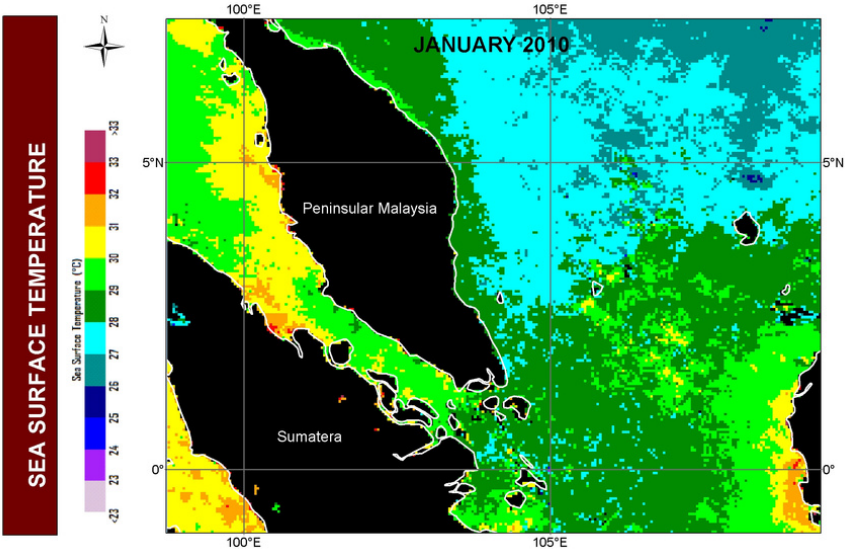


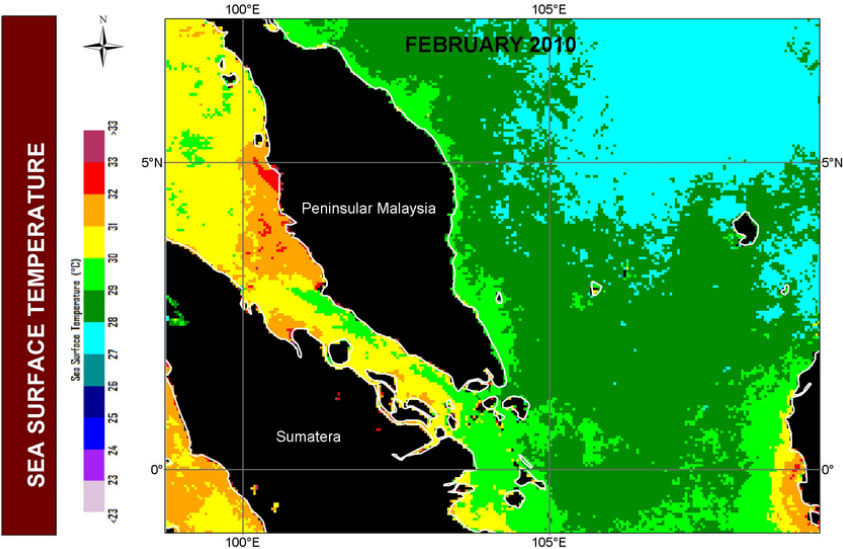
TREND OF SEA SURFACE TEMPERATURE IN PENINSULAR MALAYSIA

MONTH: JANUARY 2010



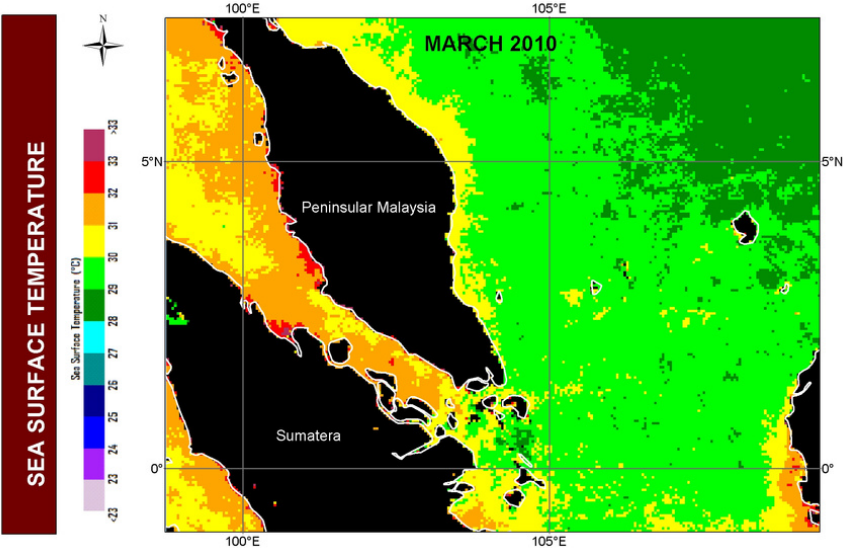
TREND OF SEA SURFACE TEMPERATURE IN PENINSULAR MALAYSIA

MONTH: FEBRUARY 2010



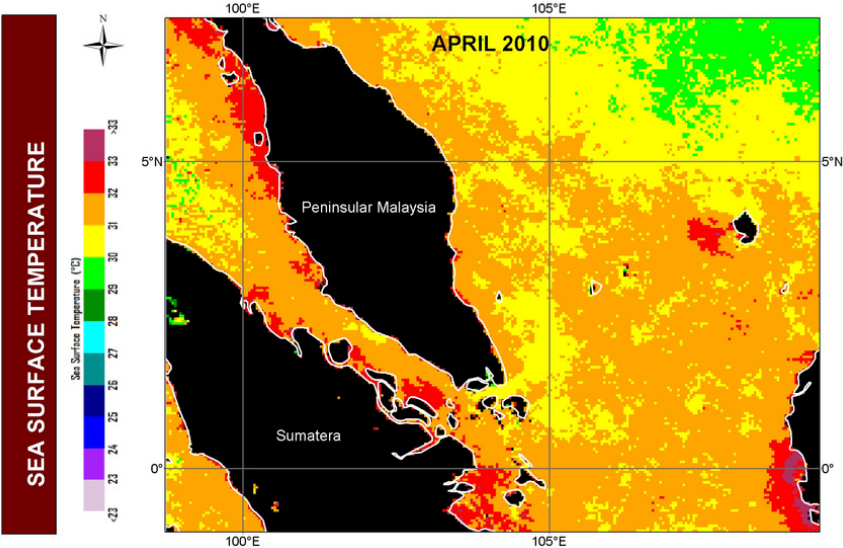
TREND OF SEA SURFACE TEMPERATURE IN PENINSULAR MALAYSIA

MONTH: MARCH 2010



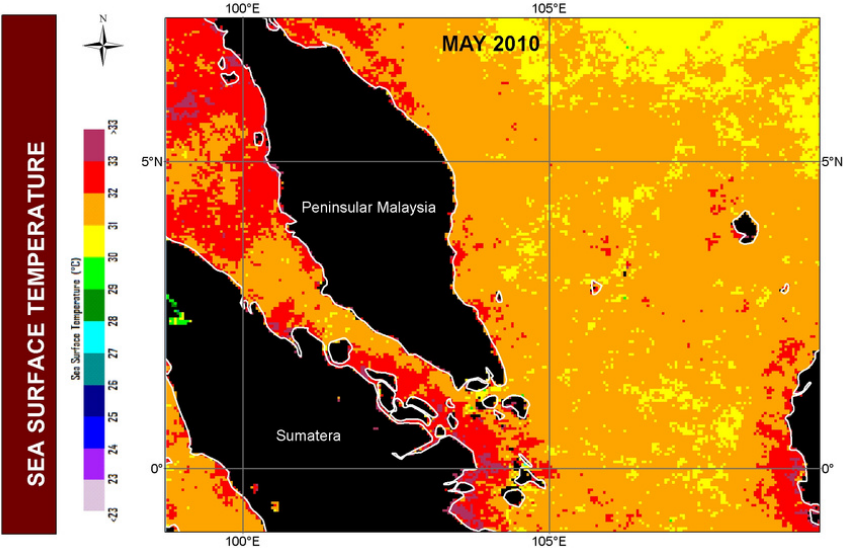
TREND OF SEA SURFACE TEMPERATURE IN PENINSULAR MALAYSIA

MONTH: APRIL 2010



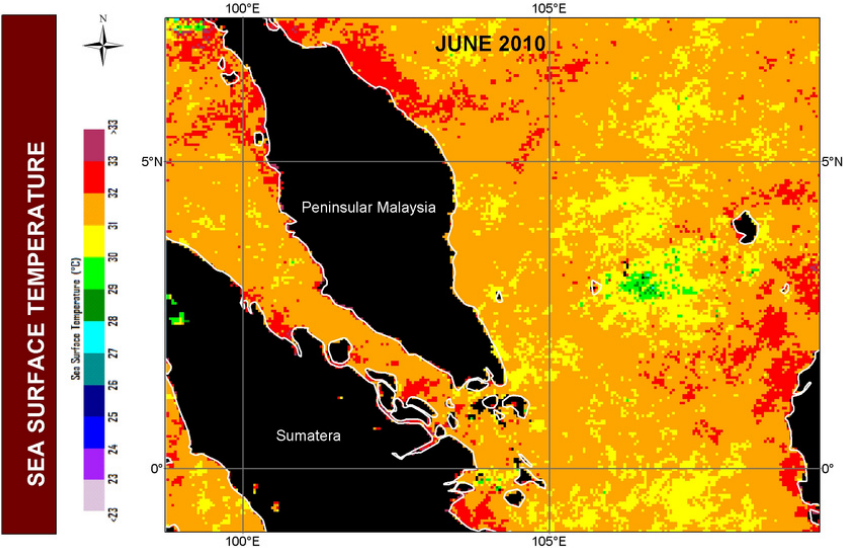
TREND OF SEA SURFACE TEMPERATURE IN PENINSULAR MALAYSIA

MONTH: MAY 2010



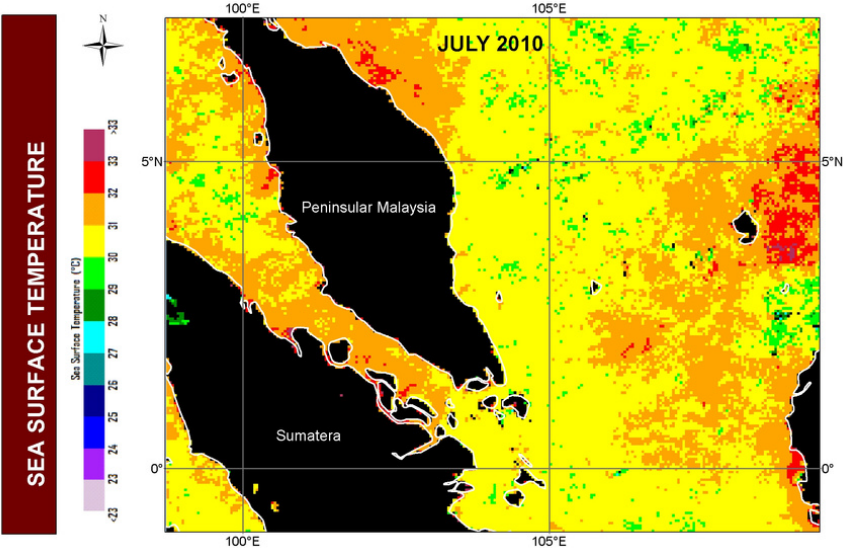
TREND OF SEA SURFACE TEMPERATURE
IN PENINSULAR MALAYSIA

MONTH: JUNE 2010



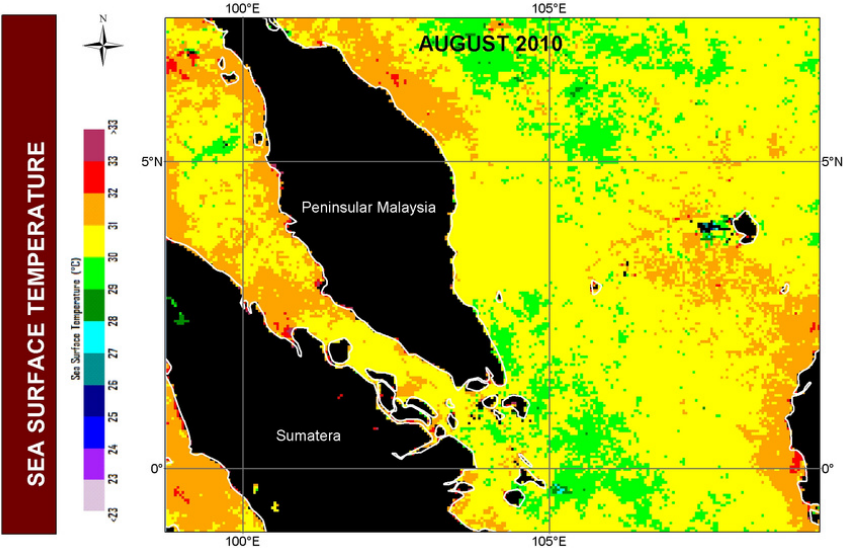
TREND OF SEA SURFACE TEMPERATURE IN PENINSULAR MALAYSIA

MONTH: JULY 2010



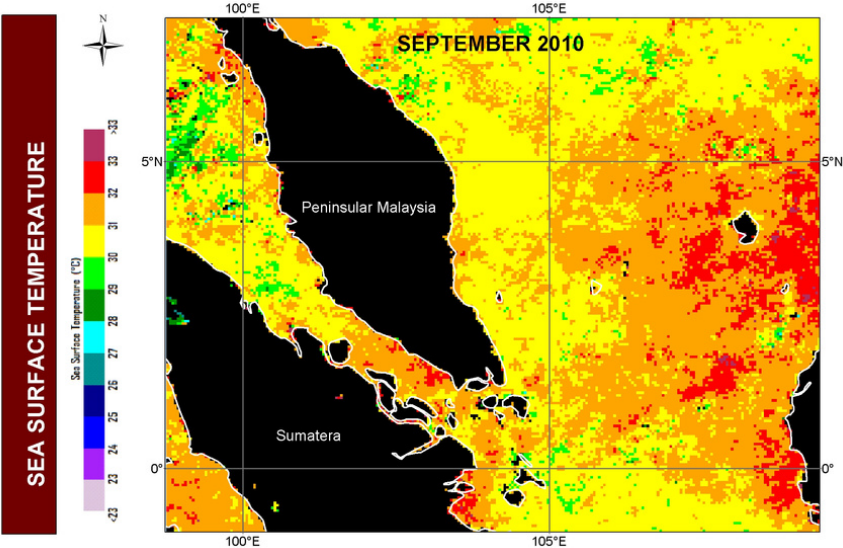
TREND OF SEA SURFACE TEMPERATURE IN PENINSULAR MALAYSIA

MONTH: AUGUST 2010



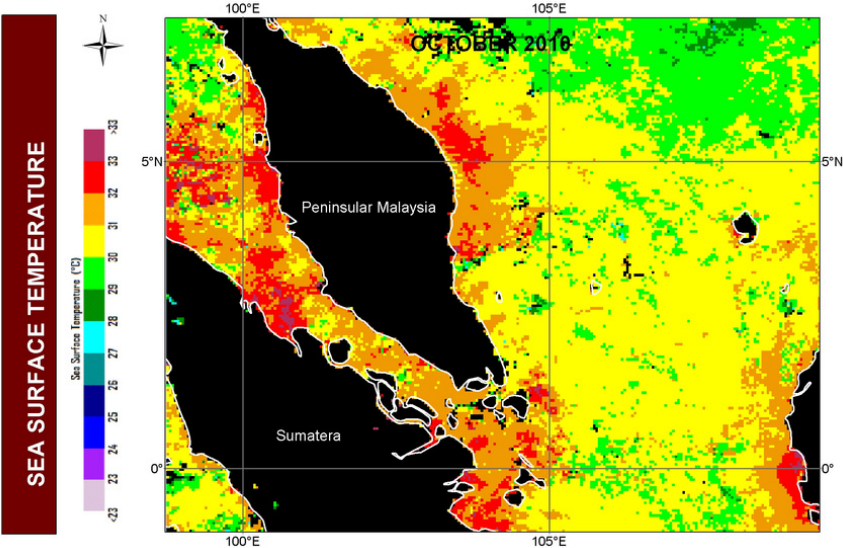
TREND OF SEA SURFACE TEMPERATURE IN PENINSULAR MALAYSIA

MONTH: SEPTEMBER 2010



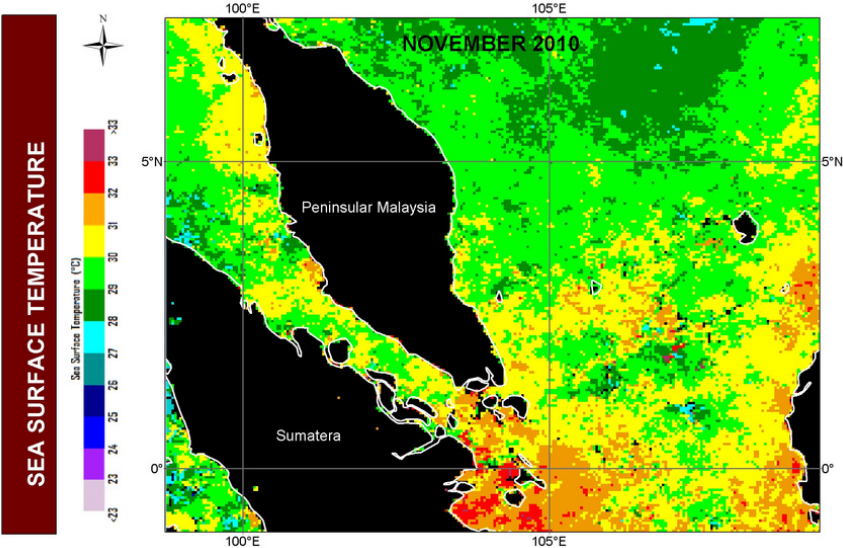
TREND OF SEA SURFACE TEMPERATURE IN PENINSULAR MALAYSIA

MONTH: OCTOBER 2010



TREND OF SEA SURFACE TEMPERATURE IN PENINSULAR MALAYSIA

MONTH: NOVEMBER 2010



TREND OF SEA SURFACE TEMPERATURE IN PENINSULAR MALAYSIA

MONTH: DECEMBER 2010

