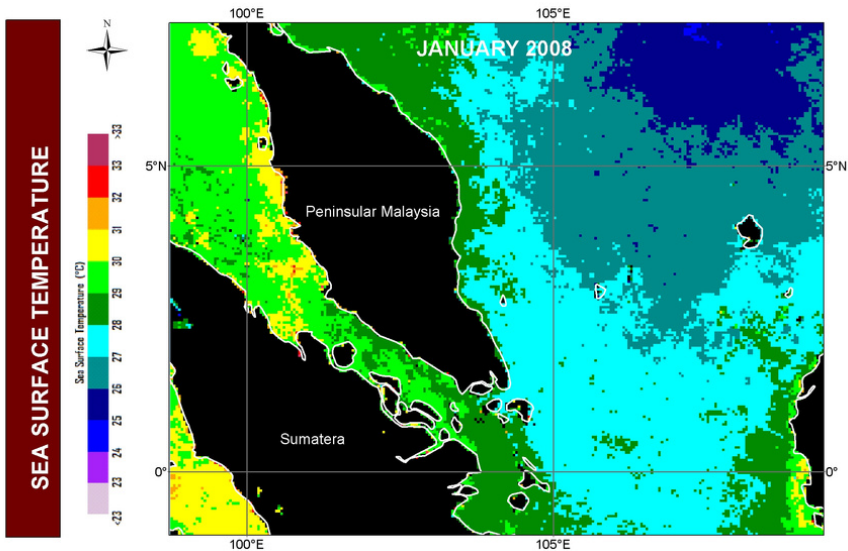


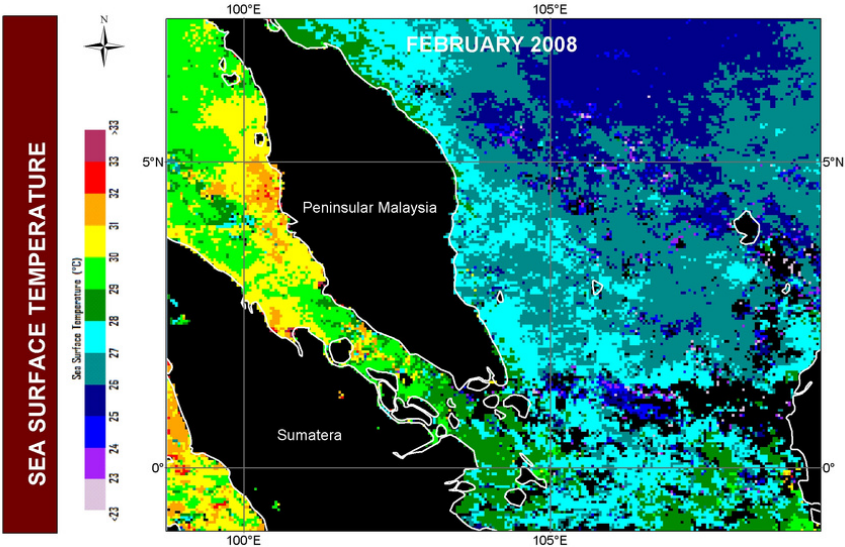
TREND OF SEA SURFACE TEMPERATURE IN PENINSULAR MALAYSIA

MONTH: JANUARY 2008



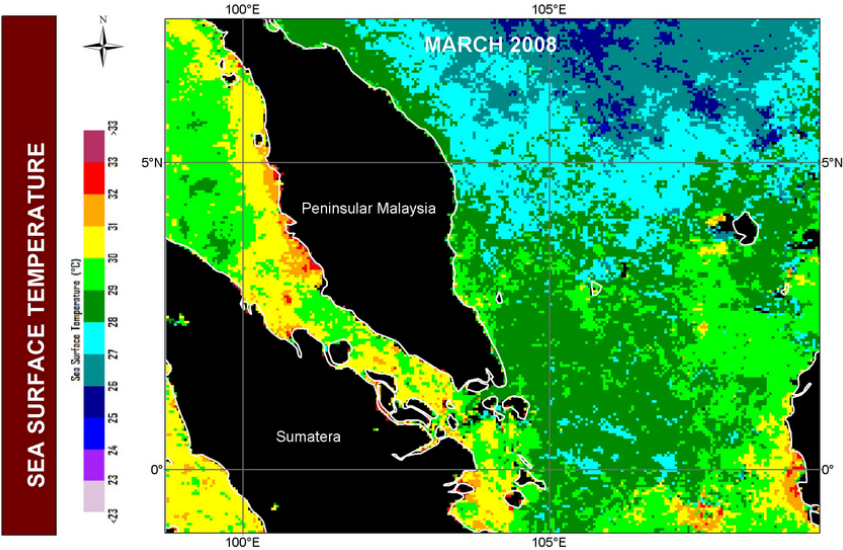
TREND OF SEA SURFACE TEMPERATURE IN PENINSULAR MALAYSIA

MONTH: FEBRUARY 2008



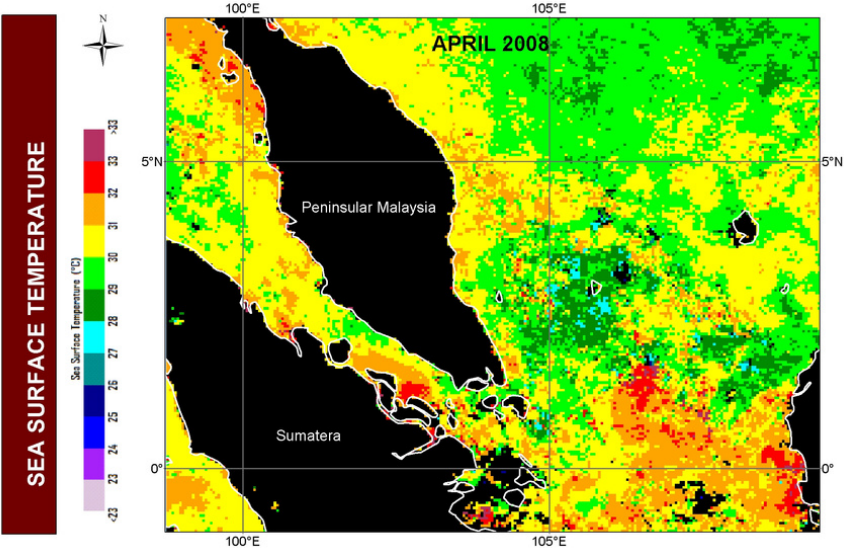
TREND OF SEA SURFACE TEMPERATURE IN PENINSULAR MALAYSIA

MONTH: MARCH 2008



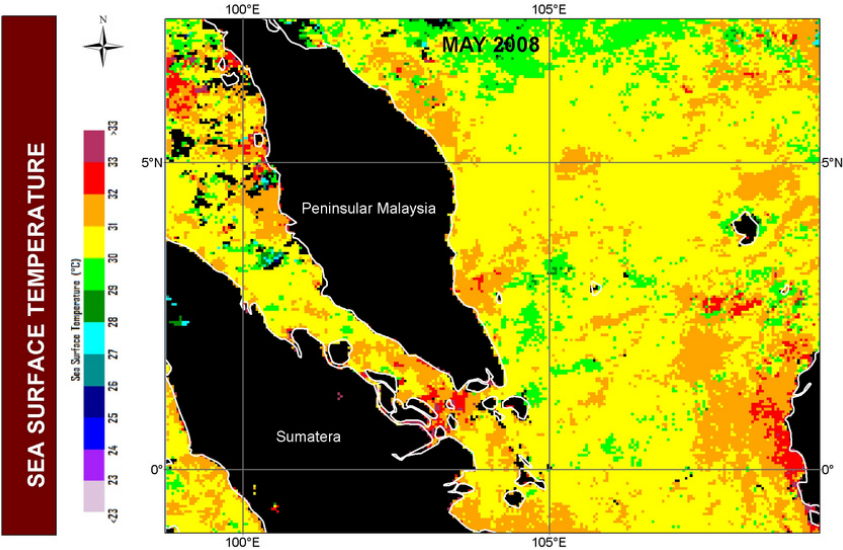
TREND OF SEA SURFACE TEMPERATURE IN PENINSULAR MALAYSIA

MONTH: APRIL 2008



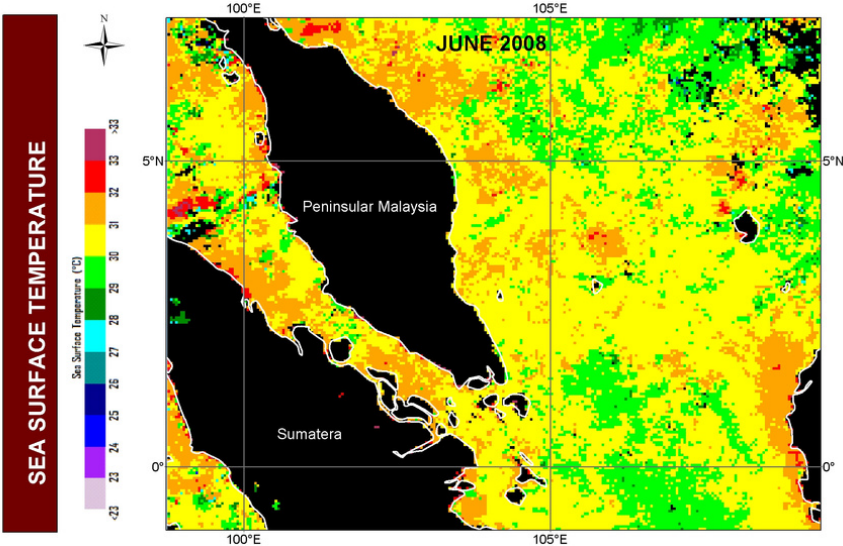
TREND OF SEA SURFACE TEMPERATURE IN PENINSULAR MALAYSIA

MONTH: MAY 2008



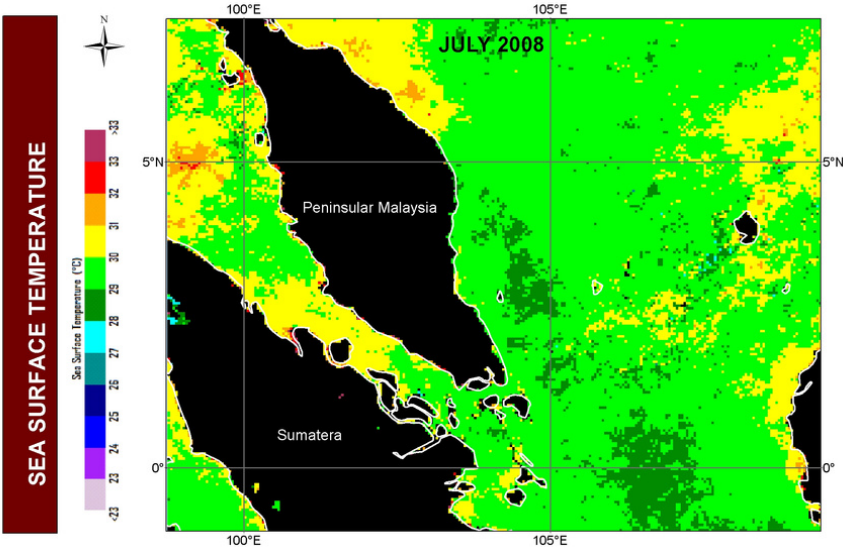
TREND OF SEA SURFACE TEMPERATURE IN PENINSULAR MALAYSIA

MONTH: JUNE 2008



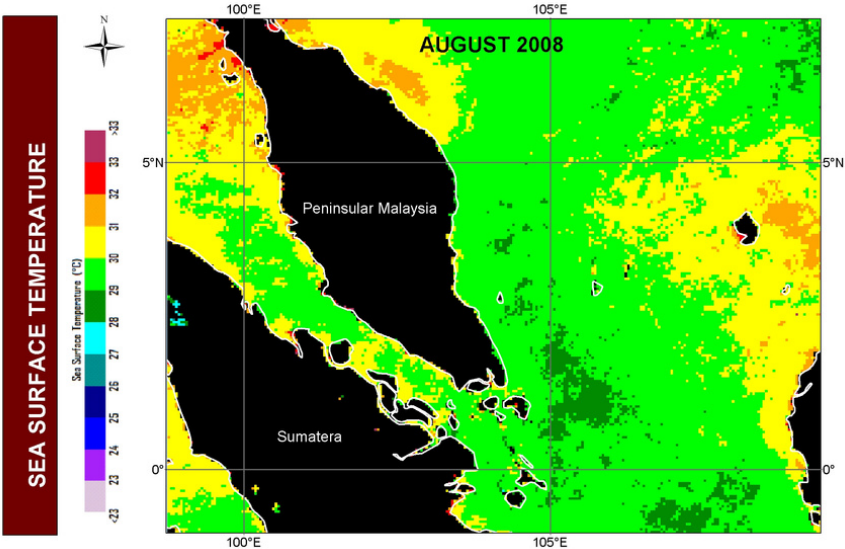
TREND OF SEA SURFACE TEMPERATURE IN PENINSULAR MALAYSIA

MONTH: JULY 2008



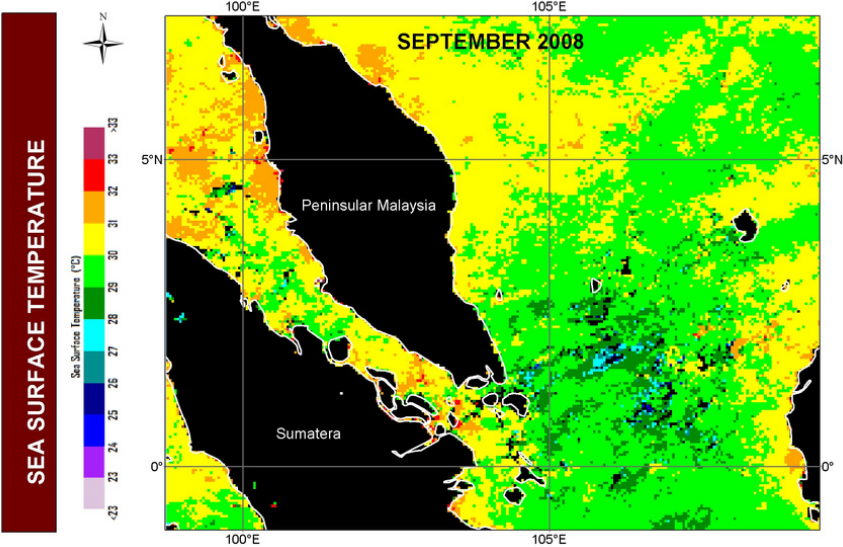
TREND OF SEA SURFACE TEMPERATURE IN PENINSULAR MALAYSIA

MONTH: AUGUST 2008



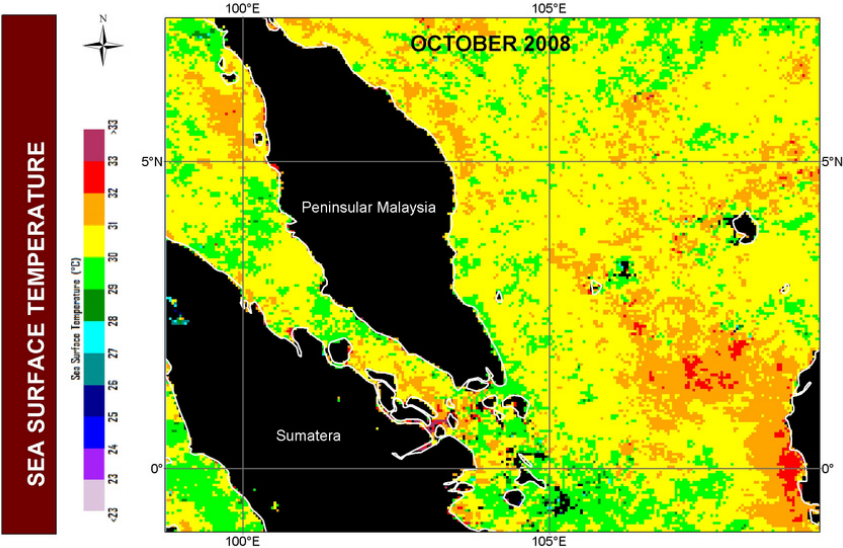
TREND OF SEA SURFACE TEMPERATURE IN PENINSULAR MALAYSIA

MONTH: SEPTEMBER 2008



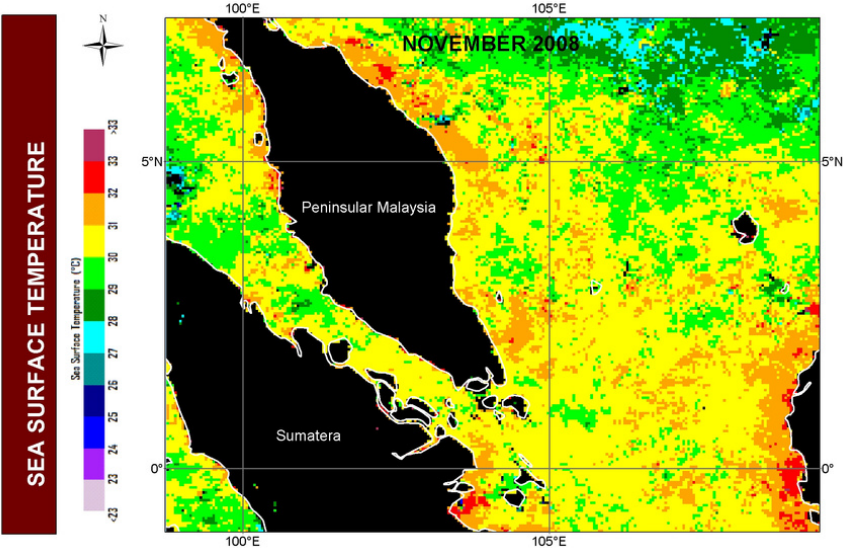
TREND OF SEA SURFACE TEMPERATURE IN PENINSULAR MALAYSIA

MONTH: OCTOBER 2008



TREND OF SEA SURFACE TEMPERATURE IN PENINSULAR MALAYSIA

MONTH: NOVEMBER 2008



TREND OF SEA SURFACE TEMPERATURE IN PENINSULAR MALAYSIA

MONTH: DECEMBER 2008

